

Analysis Report
(Ataskaita)



Sample Name: melisų eterinis aliejus
Sample Batch Nr. : 042025
Sample Origin : Germany
Botanical name : melissa officinalis
Plant Part : Leaves (lapai)

Peak #	RT [min]	Type	Width [min]	Area [counts*s]	Height [counts]	Area %	Compound
1	6.474	PV	0.0303	513.78735	246.87924	0.053	
2	9.255	VB	0.0418	920.05035	300.02206	0.096	
3	9.624	PB	0.0560	579.52783	125.17301	0.060	
4	13.281	VB	0.0401	4198.51904	1.57316e3	0.437	1-Octen-3-ol
5	13.590	PV	0.0443	1.41941e4	4.83271e3	1.477	6-Methyl-5-hepten-2-on
6	13.684	VV	0.0390	1213.82703	429.74927	0.126	Myrcen
7	13.751	VB	0.0371	512.83942	205.83376	0.053	
8	14.336	PP	0.0400	815.88080	288.47400	0.085	
9	15.138	BP	0.0430	2172.47949	768.87384	0.226	Limonen
10	15.454	BP	0.0377	1123.86145	413.95435	0.117	(Z)-b-Ocimen
11	15.854	BB	0.0426	9673.79004	3.57109e3	1.007	(E)-b-Ocimen
12	17.761	BV	0.0437	458.04028	145.43251	0.048	
13	17.875	VV	0.0454	1.07494e4	3.75131e3	1.119	Linalool
14	18.044	VV	0.0383	643.40851	218.52841	0.067	
15	18.130	VP	0.0394	922.89990	295.47214	0.096	
16	18.340	BP	0.0390	740.98547	246.72934	0.077	
17	19.003	PB	0.0442	464.74377	134.81392	0.048	
18	19.469	BB	0.0413	2277.69238	732.98669	0.237	
19	19.731	VV	0.0447	902.17316	252.35310	0.094	
20	19.876	VV	0.0371	2714.35767	1.18480e3	0.283	
21	19.934	VV	0.0455	1.49599e4	4.92321e3	1.557	Citronellal
22	20.144	VP	0.0392	666.94568	221.36189	0.069	
23	20.375	PV	0.0451	2838.32886	970.37750	0.295	Isoneral
24	20.555	VB	0.0468	1524.77173	406.20981	0.159	
25	20.838	PV	0.0420	880.04150	263.09299	0.092	
26	20.953	VV	0.0390	642.59711	226.88332	0.067	
27	21.064	VB	0.0475	5835.91797	1.81629e3	0.607	Isogeranial
28	21.465	BV	0.0402	947.65948	305.60580	0.099	
29	21.530	VV	0.0418	747.66260	243.33902	0.078	
30	21.639	VB	0.0582	898.84601	186.74576	0.094	
31	21.857	BV	0.0464	498.20096	147.45804	0.052	
32	22.068	BB	0.0473	1183.79199	342.48502	0.123	
33	22.523	VB	0.0499	479.67453	116.84949	0.050	Nerol
34	22.820	BB	0.0603	1.45956e4	3.75553e3	1.519	Citronellol
35	23.019	BP	0.0523	591.00885	137.19626	0.062	
36	23.380	BB	0.0583	2.07033e5	5.00154e4	21.548	Citral B(Neral)
37	23.790	PV	0.0533	3.02054e4	8.74569e3	3.144	Geraniol
38	23.949	VV	0.0460	2890.17310	803.33679	0.301	
39	24.483	BB	0.0666	2.98510e5	6.26665e4	31.069	Citral A(Geranial)
40	24.794	BP	0.0567	2275.21655	534.37250	0.237	
41	25.017	BP	0.0772	1122.37634	186.92642	0.117	
42	25.216	VV	0.0496	428.22971	114.57478	0.045	
43	25.498	BB	0.0440	1363.15625	397.87650	0.142	
44	25.761	BV	0.0242	470.37167	259.05243	0.049	
45	25.777	VP	0.0412	673.88910	272.47821	0.070	
46	26.270	BB	0.0504	7426.60889	2.09501e3	0.773	Methylgeranat
47	26.765	BB	0.0565	643.19318	137.66299	0.067	
48	26.907	BP	0.0459	703.97205	191.35361	0.073	
49	27.346	BV	0.0754	5067.20996	890.32007	0.527	
50	27.554	VV	0.0701	1177.16858	207.65646	0.123	
51	27.676	VB	0.0514	2356.03857	648.57153	0.245	

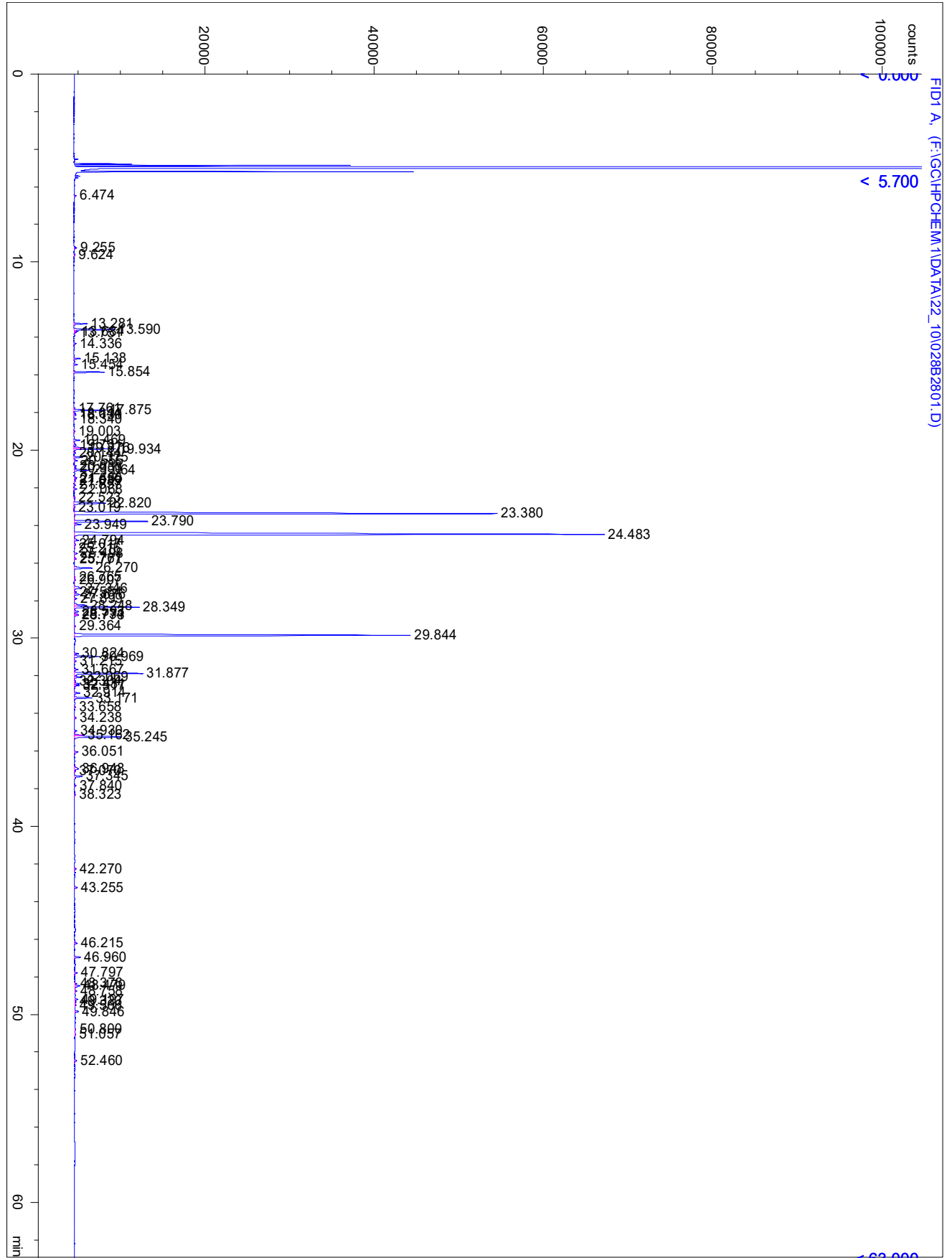
52	27.899	BP	0.0457	1178.87720	329.53207	0.123	
53	28.248	BV	0.0527	5384.79834	1.43873e3	0.560	
54	28.349	VB	0.0447	2.36024e4	7.71792e3	2.457	Geranylacetat
55	28.593	BV	0.0604	2328.22729	550.19250	0.242	
56	28.734	VV	0.0401	1453.00549	469.46460	0.151	
57	28.773	VB	0.0420	1594.53479	494.30606	0.166	
58	29.364	PP	0.0453	647.80774	174.66597	0.067	
59	29.844	BP	0.0525	1.44972e5	3.97810e4	15.089	(E) -b-Caryophyllen
60	30.824	PV	0.0417	1408.23022	472.92230	0.147	
61	30.969	VP	0.0554	9605.81152	2.77354e3	1.000	
62	31.215	BP	0.0565	930.90833	228.72057	0.097	
63	31.667	BV	0.0512	1521.12012	441.50650	0.158	
64	31.877	VV	0.0558	2.89828e4	8.08579e3	3.017	Germacren D
65	32.069	VB	0.0505	2963.23560	922.27234	0.308	
66	32.304	BV	0.0725	757.29980	134.98367	0.079	
67	32.431	VV	0.0583	2154.55518	567.89587	0.224	
68	32.517	VB	0.0458	1661.53625	573.93756	0.173	
69	32.914	PB	0.0539	2461.30688	685.09961	0.256	
70	33.171	PB	0.0546	7191.27637	2.06746e3	0.748	d-Cadinen
71	33.658	PP	0.0401	447.29129	148.52798	0.047	
72	34.238	PB	0.0582	809.73511	213.94064	0.084	
73	34.930	PB	0.0527	1023.56421	293.75287	0.107	
74	35.162	PV	0.0461	3584.49194	1.12824e3	0.373	
75	35.245	VB	0.0572	2.04618e4	5.52969e3	2.130	Caryophyllenoxid
76	36.051	PB	0.0562	1654.99536	447.01575	0.172	
77	36.948	PV	0.0924	3360.74512	493.83026	0.350	
78	37.070	VP	0.0454	535.86432	147.56058	0.056	
79	37.345	BB	0.0564	3444.98169	925.91571	0.359	a-Cadinol
80	37.840	BB	0.0427	591.37823	178.11559	0.062	
81	38.323	BP	0.0527	494.11093	116.05604	0.051	
82	42.270	PB	0.0539	877.81787	209.40369	0.091	
83	43.255	BP	0.0588	1465.38000	381.34705	0.153	
84	46.215	BP	0.0499	1135.45972	332.08817	0.118	
85	46.960	BB	0.0546	2559.29321	718.59174	0.266	
86	47.797	PP	0.0542	1093.97070	309.62000	0.114	
87	48.376	BV	0.0456	794.52496	222.75084	0.083	
88	48.479	VB	0.0716	2993.03613	606.20593	0.312	
89	48.758	BP	0.0535	729.03204	210.09430	0.076	
90	49.197	BV	0.0567	1313.23755	350.52478	0.137	
91	49.323	VB	0.0715	768.07007	132.84532	0.080	
92	49.506	BP	0.0587	609.34326	143.04047	0.063	
93	49.846	BB	0.0532	1657.23901	468.79059	0.172	
94	50.800	BP	0.0559	565.23846	134.77287	0.059	
95	51.057	BP	0.0549	533.33435	129.92554	0.056	
96	52.460	PP	0.0577	1070.85657	251.16933	0.111	

ca 21.5

< 0.05 Estragol

Totals: 9.60804e5 2.44082e5 100.000

*** End of Report ***



RTX-5-MS 60m GC-FID (Area % Normalization)/GC-MS (Identification)